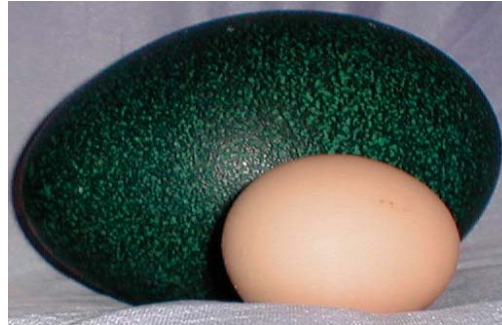


Male Emu with Emu Egg & Chick
 In the wild the male sets the eggs
 and cares for the chicks



**One Large Emu Egg can be
 equal to 12 medium chicken eggs**



**I suppose
 you're
 wondering**

**Emu Chicks have chipmunk
 stripes until they are 3 months old**



**Emu Egg Shells
 Decorated, Painted & Carved**



**Emu Leather is
 soft & supple with
 a quill pattern**



**What's
 an
 Emu?**

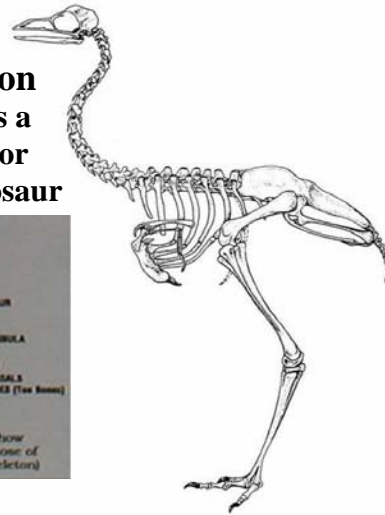
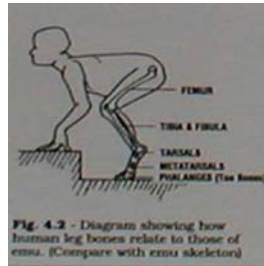


American Emu Association (AEA)
 1201 W. Main St., Suite 2, Ottawa, IL 61350
 Ph: 541-332-0675 ~ www.aea-emu.org

Emus are native to Australia.
Emus are 5 to 6 feet tall and weigh 90-130 pounds with short, stubby wings but, they cannot fly.
Emus are processed for their meat, fat, hides & feathers



Emu Skeleton is the same as a velociraptor dinosaur



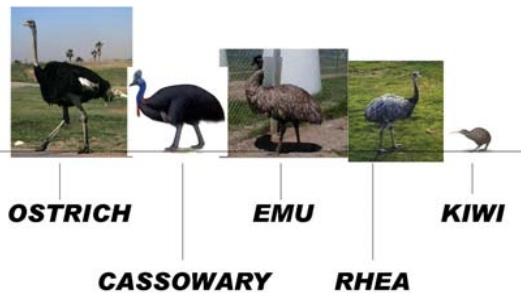
Emu Meat is a very nutritious, dark red meat



Emu Feathers have one quill with two vanes



RATITES



Emu Oil is the rendered & refined fat from the emu.

It contains:
 nutrition for the cells
 natural anti-inflammatories
 omegas 3, 6 & 9

